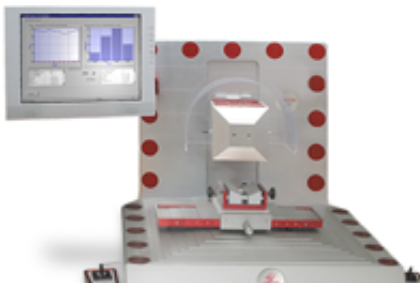




The Condor EZ is succeeded by the Condor Sigma Lite

Condor EZ, 70, 100, 150, 250

Before XYZTEC came out with the revolutionary **Condor Sigma**, we produced the Condor Classic bond testers: EZ, 70, 100, 150, 250. We still **support** these models in the field for a limited time period. However, if you are looking for a new bond tester, we recommend the latest technology.



The Condor 250 was a very popular choice for solar panel testing and other applications that require a large work area. Today, the Condor Sigma and Condor Sigma W12 are the best bond testers in this segment

The **Condor Sigma Lite** is the successor of the Condor EZ and Condor 70 models. If you are looking for a bond tester with a large work area like the Condor 250, the **Condor Sigma W12** may be the best choice, although the regular **Condor Sigma** already offers a very **large test envelope**.

Customers who previously used Condor 100 and Condor 150 bond testers most often opt for a **Condor Sigma**, which is the most advanced bond tester in the world today for their applications.

© 1999-2019 XYZTEC BV

XYZTEC Netherlands

J.F. Kennedylaan 14-B
5981 XC Panningen
Netherlands ([map / route](#))
Tel: +31-77-3060920
Fax: +31-77-3060919
sales@xyztec.com
support@xyztec.com

Other offices

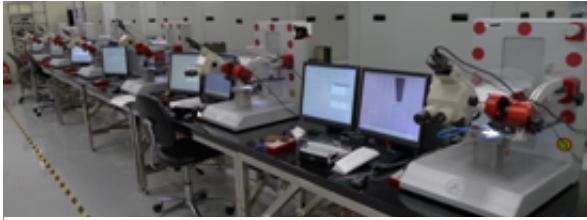
- Germany
- Taiwan
- Thailand
- United Kingdom
- USA: California
- USA: Massachusetts
- [Distributors](#)

Bond testers

- Condor *Sigma*
- Condor *Sigma Lite*
- Condor *Sigma W12*
- Condor *150HF*

This is page 1/2
Click [here](#) for the [web version](#).

Technology leader in bond testing worldwide



The Classic EZ, 70, 100, 150 and 250 models were the first bond testers to incorporate automation into bond testing. These are 8 Condor 100-3 bond testers, together handled by only 1 operator at a time.

The Condor EZ, 70, 100, 150 and 250 series are all compatible with the Condor Classic measurement units that are listed on the left, although force limits may apply. Also, they are compatible with the **Condor Classic software** as listed in the [download section](#).

The Classic series push, pull and shear sensors are the following. They have software selectable force ranges and the accuracy is quoted at $\pm 0.1\%$ of the nominal force range. If you use the more advanced **Condor Sigma**, you get better **0.075% accuracy** and **eliminate the need of selecting a force range**.

Available measuring sensors
Pull 2N or Shear 2N
Pull 20N or Shear 20N
Pull 100N or Shear 100N
Pull 500N or Shear 500N
Pull 1000N or Shear 1000N

Software selectable force ranges
50gf, 100gf, 200gf, 400gf, 800gf
500gf, 1kgf, 2kgf, 4kgf, 8kgf
2.5kgf, 5kgf, 10kgf, 20kgf, 40kgf
12.5kgf, 25kgf, 50kgf, 100kgf, 200kgf
31.25kgf, 62.5kgf, 125kgf, 250kgf, 500kgf

XYZTEC Netherlands

J.F. Kennedylaan 14-B
5981 XC Panningen
Netherlands ([map](#) / [route](#))
Tel: +31-77-3060920
Fax: +31-77-3060919
sales@xyztec.com
support@xyztec.com

Other offices

- Germany
- Taiwan
- Thailand
- United Kingdom
- USA: California
- USA: Massachusetts
- [Distributors](#)

Bond testers

- Condor *Sigma*
- Condor *Sigma Lite*
- Condor *Sigma W12*
- Condor *150HF*

This is page 2/2
Click [here](#) for the [web version](#).