

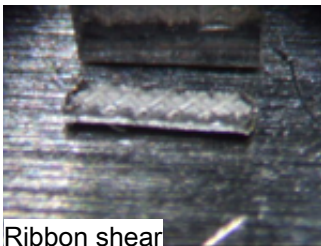
Aluminium wedge

Wedge and ribbon shear

- Shear test from a few grams up to 500kgf
- Sensor accuracy $\pm 0.075\%$
- Shear height accuracy $\pm 1\mu\text{m}$
- Complies with industry standards

[Video not included in PDF: [click here to view online](#)]

Ribbon shear test for copper ribbon up to 500kgf



Ribbon shear

Wedge shear test and wire pull tests are used to assess the quality of bonded aluminium or copper wire and ribbons. The wedge shear test is comparable to other shear tests. After an automatic touchdown, the Z-stage will move up with the predefined shear height. This touchdown and the shear height must be very accurate to make sure that the measurement results are correct and the IMC is not damaged or smeared.

Equally important is the shear tool. Due to the high forces that can occur during this test, the tool must be adapted to the wedge. XYZTEC can offer standard tools and customized deep access tools. This test is used by companies that produce microwave, high frequency, power, automotive, hybrid and solar devices.

Contact us

Did we catch your attention? Please [contact us](#) for more information, to request a demonstration or a quotation.

© 1999-2019 XYZTEC BV

XYZTEC Netherlands

J.F. Kennedylaan 14-B
5981 XC Panningen
Netherlands ([map / route](#))
Tel: +31-77-3060920
Fax: +31-77-3060919
sales@xyztec.com
support@xyztec.com

Other offices

- Germany
- Taiwan
- Thailand
- United Kingdom
- USA: California
- USA: Massachusetts
- [Distributors](#)

Bond testers

- Condor *Sigma*
- Condor *Sigma Lite*
- Condor *Sigma W12*
- Condor *150HF*

This is page 1/2
[Click here](#) for the [web version](#).

Technology leader in bond testing worldwide



Relevant products

- Condor Sigma
- Condor Sigma Lite
- Revolving Measurement Unit
- Sensors
- Tweezers
- Vision
- Software
- Calibration
- Condor Classic
- Condor 150HF
- Work holders

Special applications

Please [contact us](#) if you have any questions or special bond testing requirements.

Condor Sigma brochure

Click [here](#) to download the [Condor Sigma brochure](#), the [Condor Sigma W12 brochure](#) or the [Condor Sigma Lite brochure](#) or the [Condor Sigma Vision brochure \(PDF\)](#).

Representatives

To find your local representative, please select a region:

- Americas
- Europe, Middle East, Africa
- Greater China
- Japan
- Asia / Pacific



Click [here](#) to access the XYZTEC consumables webshop

© 1999-2019 XYZTEC BV

XYZTEC Netherlands

J.F. Kennedylaan 14-B
5981 XC Panningen
Netherlands ([map](#) / [route](#))
Tel: +31-77-3060920
Fax: +31-77-3060919
sales@xyztec.com
support@xyztec.com

Other offices

- Germany
- Taiwan
- Thailand
- United Kingdom
- USA: California
- USA: Massachusetts
- [Distributors](#)

Bond testers

- Condor *Sigma*
- Condor *Sigma Lite*
- Condor *Sigma W12*
- Condor *150HF*

This is page 2/2
Click [here](#) for the [web version](#).

Technology leader in bond testing worldwide