



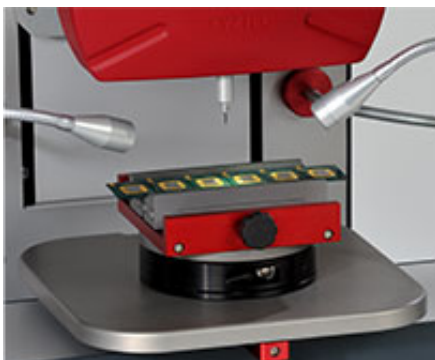
Maximize your tests per minute with the XYZTEC Condor Sigma

Condor Sigma Series bond testers

Put it to the test

Performance and flexibility

The Condor Sigma is the most advanced bond tester on the market, combining the unique strengths of the Condor series with the latest technologies and innovations. Whether you need a dedicated or multipurpose bond tester, the Condor Sigma is the best choice featuring unparalleled 0.075% accuracy, the best **ergonomics**, **highest throughput**, maximum flexibility and the lowest cost of ownership.



Compatibility: use your existing work holders on our shuffle plate

Use existing tools and work holders

This system is designed to be compatible with the most commonly used work holders and tooling, that you may already have in stock. The compatibility modes ensure consistency in your

© 1999-2019 XYZTEC BV

XYZTEC Netherlands

J.F. Kennedylaan 14-B
5981 XC Panningen
Netherlands ([map / route](#))
Tel: +31-77-3060920
Fax: +31-77-3060919
sales@xyztec.com
support@xyztec.com

Other offices

- Germany
- Taiwan
- Thailand
- United Kingdom
- USA: California
- USA: Massachusetts
- **Distributors**

Bond testers

- Condor *Sigma*
- Condor *Sigma Lite*
- Condor *Sigma W12*
- Condor *150HF*

This is page 1/5
Click [here](#) for the **web version**.

Technology leader in bond testing worldwide



measurement results across machines. Equipped with the **most powerful intuitive software**, operators can quickly learn to use the Condor Sigma alongside your existing equipment and procedures.

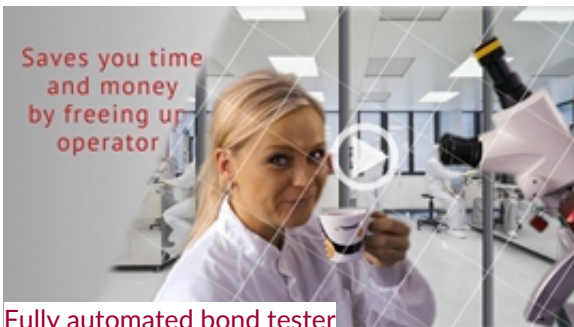


With the 6 head RMU up to 200 kgf shear, 200 kgf pull/push you may never have to change cartridges manually again

Revolving Measurement Unit up to 200 kgf shear, pull and push

XYZTEC is well known for many innovative bond testing solutions. The **Revolving Measurement Unit (RMU)** is one of the results of XYZTEC engineering team utilizing customer feedback.

Now the capability of the **RMU** achieves up to 200 kgf shear and 200 kgf pull and push. The flexible configuration allows 1 to 6 sensors enabling fully automatic and manual testing. Compared to changing cartridges manually, the **RMU** eliminates warm up time and greatly reduces the risk of sensor damage.



Fully automated bond tester

Built in image capture and automation camera

The standard configuration contains a **perpendicular automation camera** at a small offset from the test point with a choice of two magnifications and optical resolutions down to 1.5 µm.

The Condor Sigma can be equipped with a maximum of **three live cameras** mounted in different

© 1999-2019 XYZTEC BV

XYZTEC Netherlands

J.F. Kennedylaan 14-B
5981 XC Panningen
Netherlands ([map / route](#))
Tel: +31-77-3060920
Fax: +31-77-3060919
sales@xyztec.com
support@xyztec.com

Other offices

- Germany
- Taiwan
- Thailand
- United Kingdom
- USA: California
- USA: Massachusetts
- Distributors

Bond testers

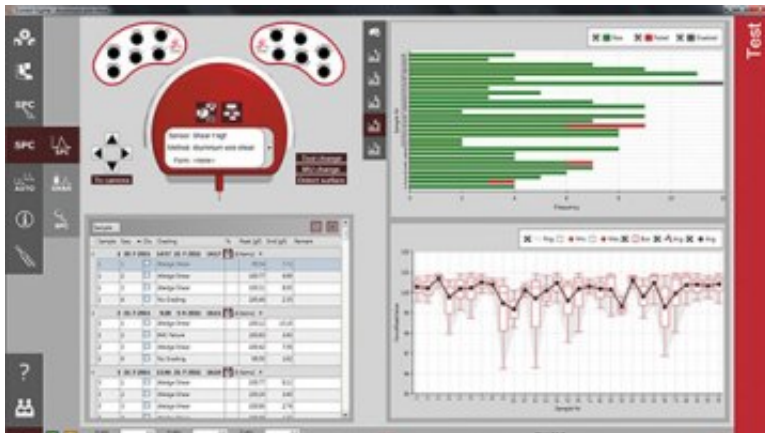
- Condor *Sigma*
- Condor *Sigma Lite*
- Condor *Sigma W12*
- Condor *150HF*

This is page 2/5
Click [here](#) for the **web version**.

Technology leader in bond testing worldwide



positions to offer the best range of imaging possibilities. You may want to opt for a trinocular microscope with a camera or a side view camera. For **automation**, fiducial mark recognition is available.



Powerful statistical process control and clear graphs give complete control of your production process to the engineer. At the same time, operators see fewer options and can learn to work with the Condor Sigma in a matter of minutes.

Soft landing and high resolution

A wide variety of tests is possible using the Condor Sigma with forces ranging from less than 1 gf to 200 kgf. Digital temperature correction and the world's highest resolution of 24 bits contribute to the most reliable and repeatable measurement results.

The shear landing force is programmable to a minimum of a few grams. Even on a higher speed a soft landing is possible. Featuring 50 mm/s the X, Y & Z axes are very quick and power up in any position.



Ergonomic joysticks: full control at your finger tips

Modular and open design

All sensor modules are interchangeable and fit any single heads and the **Revolving Measurement Unit**. Fully calibrated and tested, each sensor module can be removed and replaced within a few minutes.

© 1999-2019 XYZTEC BV

XYZTEC Netherlands

J.F. Kennedylaan 14-B
5981 XC Panningen
Netherlands ([map / route](#))
Tel: +31-77-3060920
Fax: +31-77-3060919
sales@xyztec.com
support@xyztec.com

Other offices

- Germany
- Taiwan
- Thailand
- United Kingdom
- USA: California
- USA: Massachusetts
- Distributors

Bond testers

- Condor *Sigma*
- Condor *Sigma Lite*
- Condor *Sigma W12*
- Condor *150HF*

This is page 3/5
Click [here](#) for the [web version](#).

Technology leader in bond testing worldwide



Quick change release: change work holders in seconds

The open frame design and large stroke for all three stages offer the capability to handle the widest range of sample sizes with little or no special tooling. **High accuracy quick release work holders** and measurement units ensure rapid sample loading and production setup.

Put it to the test!

With 15+ years in house experience, XYZTEC takes bond testing to a new level with the Condor Sigma. It uses the best of established technology together with innovation to set the new standard. Its **broad specifications** ensure it has the capability to perform all commonly used industry tests as well as special and challenging applications.



Sigma

320x168x168mm

Large work area for more flexibility and high velocity stages with superb accuracy

© 1999-2019 XYZTEC BV

XYZTEC Netherlands

J.F. Kennedylaan 14-B
5981 XC Panningen
Netherlands ([map / route](#))
Tel: +31-77-3060920
Fax: +31-77-3060919
sales@xyztec.com
support@xyztec.com

Other offices

- Germany
- Taiwan
- Thailand
- United Kingdom
- USA: California
- USA: Massachusetts
- **Distributors**

Bond testers

- Condor *Sigma*
- Condor *Sigma Lite*
- Condor *Sigma W12*
- Condor *150HF*

This is page 4/5
Click [here](#) for the **web version**.

Technology leader in bond testing worldwide



Current users of bond test equipment will find that the Condor Sigma system will provide an easy transition from their existing process to the state of the art Condor Sigma platform. Performance is without a doubt best in class, but do not take our word for it. **Try it for yourself, and put it to the test!**



The Condor Sigma W12 is the ideal solution for 300mm (12 inch) wafer testing

Condor Sigma flyer

Click [here](#) to download the [Condor Sigma brochure](#), the [Condor Sigma W12 brochure](#), the [Condor Sigma Lite brochure](#) or the [Condor Sigma Vision brochure \(PDF\)](#).



The standard perpendicular camera can be configured to save pictures with your data, depending on the measured force or failure mode

Contact us

Did we catch your attention? Please [contact us](#) for more information about the Condor Sigma, to request a demonstration or a quotation.

© 1999-2019 XYZTEC BV

XYZTEC Netherlands

J.F. Kennedylaan 14-B
5981 XC Panningen
Netherlands ([map](#) / [route](#))
Tel: +31-77-3060920
Fax: +31-77-3060919
sales@xyztec.com
support@xyztec.com

Other offices

- Germany
- Taiwan
- Thailand
- United Kingdom
- USA: California
- USA: Massachusetts
- [Distributors](#)

Bond testers

- Condor *Sigma*
- Condor *Sigma Lite*
- Condor *Sigma W12*
- Condor *150HF*

This is page 5/5
Click [here](#) for the [web version](#).

Technology leader in bond testing worldwide