

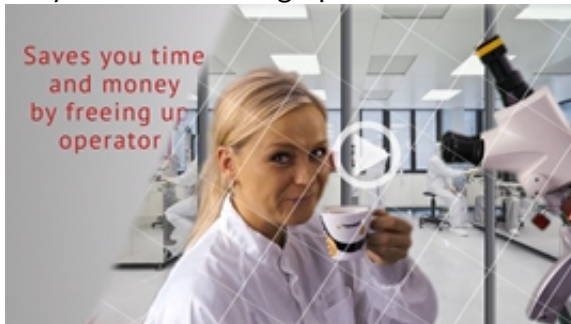


Condor Sigma » Software



Die Condor Sigma Software spricht unsere Sprache. Ein kleiner Ausschnitt der deutschen Version wird Ihnen hier vorgestellt.

- Compatible with all latest Windows versions, 32 and 64 bit
- Minimum number of mouse clicks
- Live force graphs
- **SECS/GEM communication**
- Customizable screens
- Main menu is always visible
- Live image capture
- Lifetime free software updates
- More than 30 export formats
 - **Built-in data export editor**
- **Wafer map import**
- Excel like filtering
- Report designer (optional)
- **Automation software** with fiducial mark recognition
- **Matrix programming made easy**
- Powerful options to group and sort data
- Scriptable test methods for exotic applications
- Easy to use intuitive graphical user interface



Fully automated bond tester; click to see it in action!

- Live SPC with multiple views for analysis
- SQL server database for storing the test results
- Designed for wide-screen and touch-screen monitors
- Condor Sigma simulator software available

© 1999-2019 XYZTEC BV

XYZTEC Netherlands

J.F. Kennedylaan 14-B
 5981 XC Panningen
 Netherlands ([map / route](#))
 Tel: +31-77-3060920
 Fax: +31-77-3060919
sales@xyztec.com
support@xyztec.com

Other offices

- Germany
 - Taiwan
 - Thailand
 - United Kingdom
 - USA: California
 - USA: Massachusetts
 - **Distributors**

Bond testers

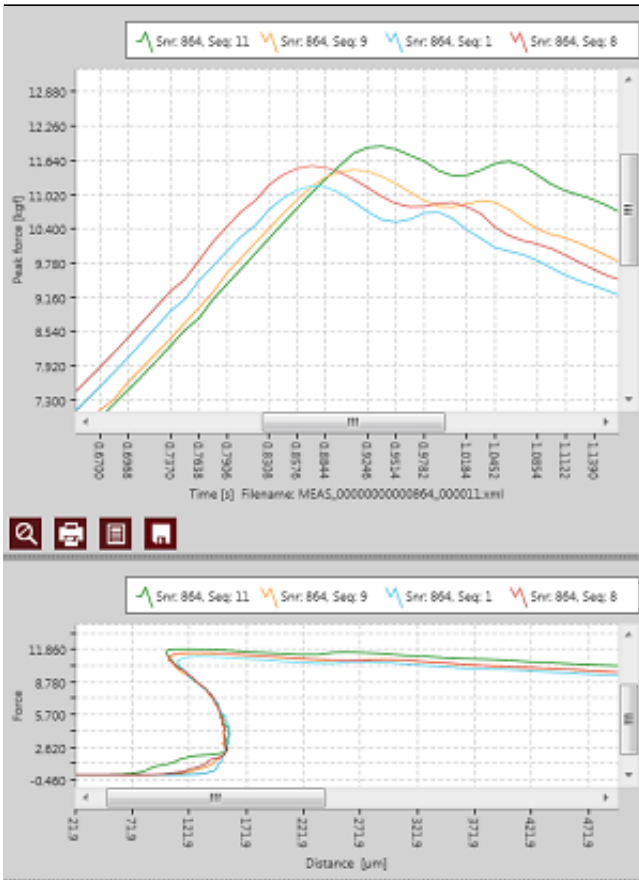
- Condor *Sigma*
 - Condor *Sigma Lite*
 - Condor *Sigma W12*
 - Condor *150HF*

This is page 1/8
 Click [here](#) for the **web version**.

Technology leader in bond testing worldwide



- Video software training
- Remote access support
- MSA3 support
- Composite Surface Imaging
- Keyboard arrow keys can be used to control the stage and z-axis
- Custom forms and gradings can be incorporated as an SPC management system for storing measurement results
- Built-in data export editor
- Networking support for centralized database server
- Multiple language (also for OS)



Condor Sigma graph overlay multiple measurements

The standard for bond test software

To make the most advanced bond tester control software on the market, we combined the unique strengths of the Condor series with the latest software technologies and innovations. With the introduction of the Condor Sigma software we break the legacy by introducing the most powerful intuitive software. Operators can quickly learn to use the Condor Sigma alongside

© 1999-2019 XYZTEC BV

XYZTEC Netherlands

J.F. Kennedylaan 14-B
 5981 XC Panningen
 Netherlands ([map / route](#))
 Tel: +31-77-3060920
 Fax: +31-77-3060919
 sales@xyztec.com
 support@xyztec.com

Other offices

- Germany
- Taiwan
- Thailand
- United Kingdom
- USA: California
- USA: Massachusetts
- Distributors

Bond testers

- Condor *Sigma*
- Condor *Sigma Lite*
- Condor *Sigma W12*
- Condor *150HF*

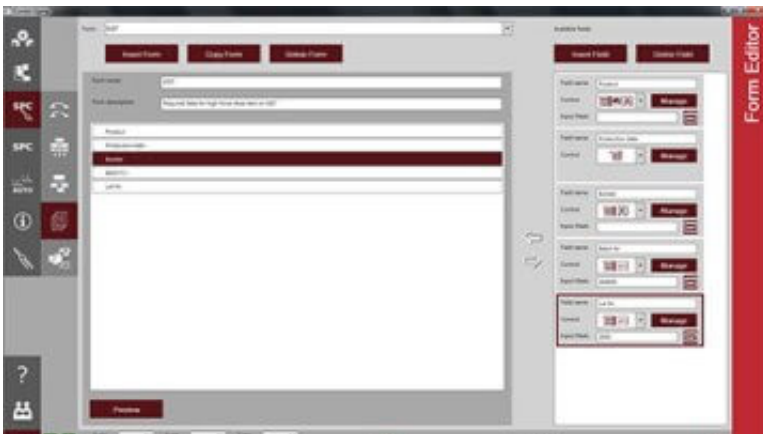
This is page 2/8
Click [here](#) for the [web version](#).

Technology leader in bond testing worldwide



your existing equipment and procedures. With minimum mouse clicks you achieve exactly what you desire. As the main menu is always visible, you keep overview even in the customized screens.

A great strength of the Condor Sigma software is that it is completely open, allowing you to easily customize it for the widest range of tests. For more standard applications the Condor Sigma software features onboard graphics and intelligent wizards, providing intuitive operator control. It ensures complete documentation of the test protocol, provides preset configurations and simple, intuitive operator screens, making it ideal for the production environment. The more capable and flexible options are still there should you need them, but they can be hidden for day to day use.



Ask us about the new forms concept integrated into the Condor Sigma Software

Software updates come with the matched fully tested firmware embedded. This ensures that whatever software version you use, the hardware will use the exactly matched and fully tested firmware revision and allows you to easily up and/or downgrade at any time.

The Condor Sigma software provides sophisticated SPC data management. It uses a unique feature referred to as 'work forms' that can be used as an SPC management system for storing the measurement results. Control rules can be defined and used for real-time monitoring of the measurement data. Furthermore it offers comprehensive statistical information for analyzing the complete production process, including different types of graphs that can be viewed on screen or printed in a report.

XYZTEC Netherlands

J.F. Kennedylaan 14-B
5981 XC Panningen
Netherlands ([map / route](#))
Tel: +31-77-3060920
Fax: +31-77-3060919
sales@xyztec.com
support@xyztec.com

Other offices

- Germany
- Taiwan
- Thailand
- United Kingdom
- USA: California
- USA: Massachusetts
- **Distributors**

Bond testers

- Condor *Sigma*
- Condor *Sigma Lite*
- Condor *Sigma W12*
- Condor *150HF*

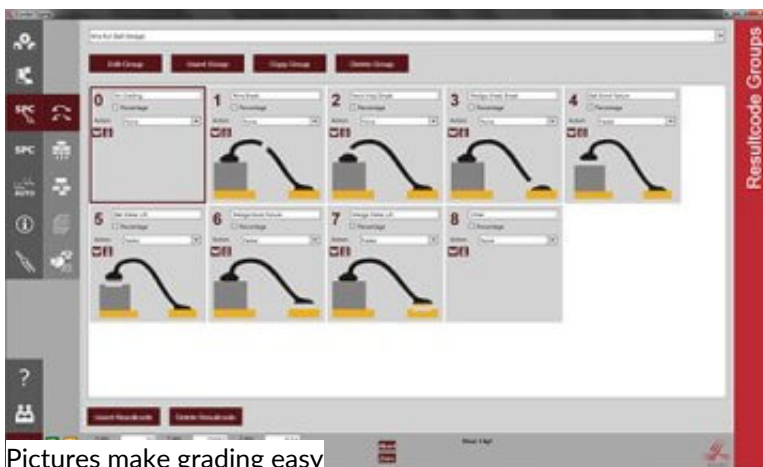
This is page 3/8
Click [here](#) for the **web version**.



The Condor Sigma software supports various authorization levels. Shown here is an easy to learn operator screen

Full 3D automatic testing

A major software feature is the capability of the Condor Sigma software to provide real **three-dimensional automatic testing** ([click here](#) for a **video**). Automatic test procedures are created and maintained through the engineering level, while operators can start automation just by a single click. Numerous features can be used for optimal customization to fully suit the requirements. For example: the input of variable data of the test sample, or the automatic generation of data extraction through print-out and/or export.



Pictures make grading easy

One of the most important parts in all software that collects data like the Condor Sigma software, is the possibility to extract measurement data in several ways. The Condor software is able to export data in more than 30 formats such as PDF, XML, XLS, DOC for use in other applications.

Wafer map import

The Condor Sigma software offers import- and export of multiple file formats for wafer maps

© 1999-2019 XYZTEC BV

XYZTEC Netherlands

J.F. Kennedylaan 14-B
5981 XC Panningen
Netherlands ([map / route](#))
Tel: +31-77-3060920
Fax: +31-77-3060919
sales@xyztec.com
support@xyztec.com

Other offices

- Germany
- Taiwan
- Thailand
- United Kingdom
- USA: California
- USA: Massachusetts
- **Distributors**

Bond testers

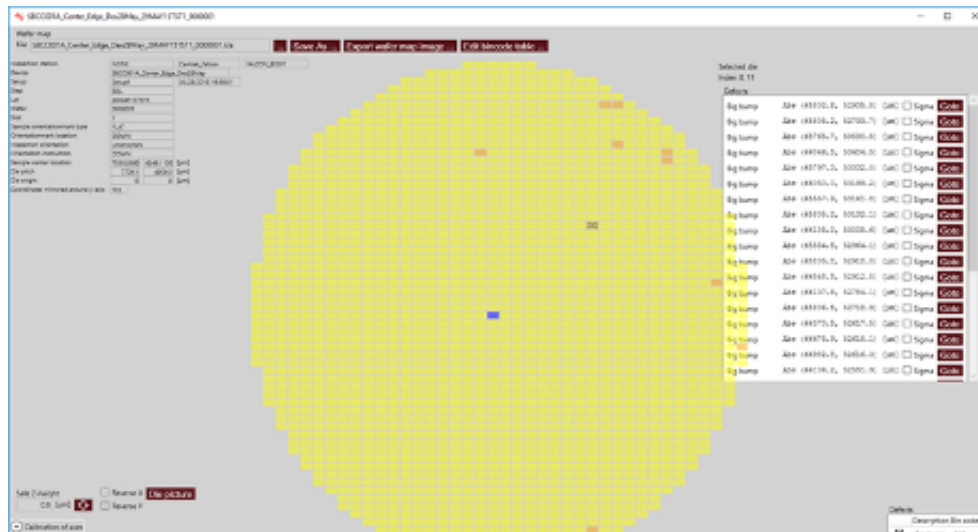
- Condor *Sigma*
- Condor *Sigma Lite*
- Condor *Sigma W12*
- Condor *150HF*

This is page 4/8
Click [here](#) for the **web version**.

Technology leader in bond testing worldwide



(KLARF, INF, etc.). After the import the map shows a complete overview. The system will guide you step by step through all marked defects.



The wafer map control screen, offers import of multiple wafer map file formats and shows defects and tested positions

The tested positions are clearly marked on the map. When all tests are finished, the wafer map and test results can be exported for full traceability. For each die a high resolution picture can be made that shows and marks the tested bumps. An offline viewer is available to check the exported wafer map files and the test results.

SECS/GEM

SECS/GEM is an equipment interface protocol for equipment-to-host data communications in the semiconductor industry. As market leader in bond testing, we often get requests to interface with the factory host. Among other protocols, XYZTEC offers SECS/GEM communication directly in the Condor Sigma software or via an EFEM. [Contact XYZTEC](#) for more information and options for your factory.

Composite Surface Imaging

Using composite surface imaging techniques, it is possible to accurately determine the heights of a feature on your sample. This can be used for multiple purposes, like determining loop heights without actually touching the wire. It is also possible to produce images wherein everything is in focus. The following video shows how an Optical 3D model is constructed.

[Video not included in PDF: [click here to view online](#)]

Centralized database for enhanced security and SPC options

© 1999-2019 XYZTEC BV

XYZTEC Netherlands

J.F. Kennedylaan 14-B
5981 XC Panningen
Netherlands ([map / route](#))
Tel: +31-77-3060920
Fax: +31-77-3060919
sales@xyztec.com
support@xyztec.com

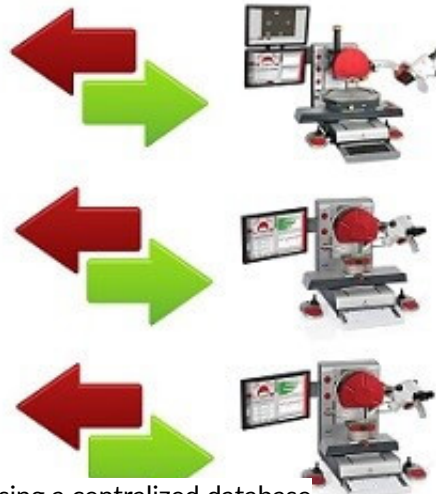
Other offices

- Germany
- Taiwan
- Thailand
- United Kingdom
- USA: California
- USA: Massachusetts
- [Distributors](#)

Bond testers

- Condor *Sigma*
- Condor *Sigma Lite*
- Condor *Sigma W12*
- Condor *150HF*

This is page 5/8
Click [here](#) for the [web version](#).



Three different Condor Sigma bond testers using a centralized database

The XYZTEC Condor Sigma is unique in its ability to share a centralized database with other testers. The extensive networking support enables the customer to increase security and to exchange settings and test data between any number of Condor Sigma bond testers and a central database.

If you own multiple bond testers a centralized database greatly enhances Statistical Process Control (SPC). It enables engineers to develop and share uniform test settings among several machines, improving the quality of measurements. Advantages of a centralized database also include better security, storage capacity, historical information records and data integrity as well as easier administration and updates. Database management becomes more cost effective with the Condor Sigma.

Superior data export editor

XYZTEC Netherlands

J.F. Kennedylaan 14-B
5981 XC Panningen
Netherlands ([map / route](#))
Tel: +31-77-3060920
Fax: +31-77-3060919
sales@xyztec.com
support@xyztec.com

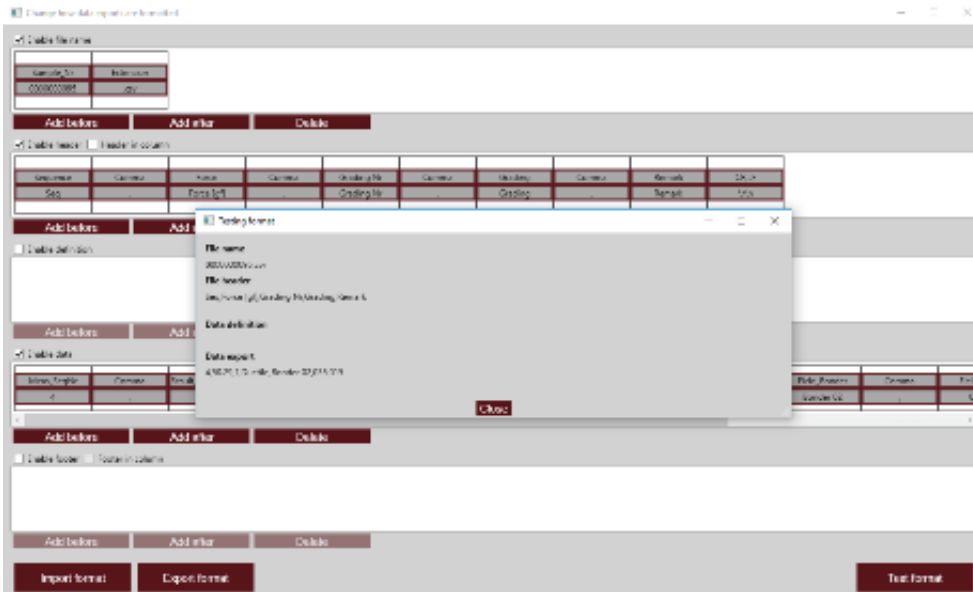
Other offices

- Germany
- Taiwan
- Thailand
- United Kingdom
- USA: California
- USA: Massachusetts
- [Distributors](#)

Bond testers

- Condor *Sigma*
- Condor *Sigma Lite*
- Condor *Sigma W12*
- Condor *150HF*

This is page 6/8
Click [here](#) for the [web version](#).



Configure your own exports with the Condor Sigma and save to a file or the clipboard

Another unique feature of the Condor Sigma software is its free, in-built and easy to use data export editor. This enables the engineer to create their own reports in almost any format, to be saved to a file or the clipboard.

The export editor is user friendly and comes with a test format function which illustrates the output of your configuration using dummy data. The engineer has the flexibility to setup all the fields you need like file name, report headers, an optional data definition field and of course the format of the test data itself.

The ability to create their own reports quickly by themselves is valued by many XYZTEC customers. However, XYZTEC also continues to provide remote and on-site support both via its **worldwide support network of local partners** and by its own specialists.

Put it to the test!

Current users of bond test equipment will find that the Condor Sigma system will provide an easy transition from their existing process to the state of the art Condor Sigma platform.

© 1999-2019 XYZTEC BV

XYZTEC Netherlands

J.F. Kennedylaan 14-B
5981 XC Panningen
Netherlands ([map / route](#))
Tel: +31-77-3060920
Fax: +31-77-3060919
sales@xyztec.com
support@xyztec.com

Other offices

- Germany
- Taiwan
- Thailand
- United Kingdom
- USA: California
- USA: Massachusetts
- **Distributors**

Bond testers

- Condor *Sigma*
- Condor *Sigma Lite*
- Condor *Sigma W12*
- Condor *150HF*

This is page 7/8
Click [here](#) for the **web version**.

Technology leader in bond testing worldwide



Powerful statistical process control and clear graphs give complete control of your production process to the engineer

Define matrix	
25	Set Fiducial
26	Use Fiducial
1	Move
2	Test
3	Move

Matrix automation programming snippet

Contact us

Did we catch your attention? Please [contact us](#) for more information or to request a demonstration or a quotation.

XYZTEC Netherlands

J.F. Kennedylaan 14-B
5981 XC Panningen
Netherlands ([map](#) / [route](#))
Tel: +31-77-3060920
Fax: +31-77-3060919
sales@xyztec.com
support@xyztec.com

Other offices

- Germany
- Taiwan
- Thailand
- United Kingdom
- USA: California
- USA: Massachusetts
- [Distributors](#)

Bond testers

- Condor *Sigma*
- Condor *Sigma Lite*
- Condor *Sigma W12*
- Condor *150HF*

This is page 8/8
Click [here](#) for the [web version](#).