

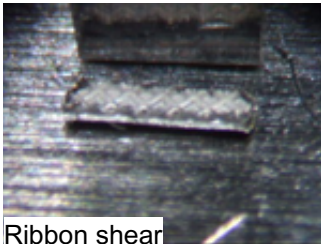
Aluminium wedge

## Wedge and ribbon shear

- 몇 g 에서 **500kgf 까지** shear 테스트
- 센서 정확도  $\pm 0.075\%$
- Shear height 정확도  $\pm 1\mu\text{m}$
- 산업 표준에 따름

[Video not included in PDF: [click here to view online](#)]

## 500kgf 까지 copper ribbon shear 테스트



Ribbon shear

Wedge shear 테스트와 Wire pull 테스트는 bonded aluminium 또는 copper wire 와 ribbons 을 평가하는데 사용됩니다. Wedge shear 테스트는 다른 shear test와 비슷합니다. 자동 touchdown 후 Z축은 기 설정된 Shear height까지 위로 움직입니다. Touchdown 과 Shear height 는 측정결과가 올바르고, IMC가 손상을 입지 않도록 하기 위해서 매우 정확해야 합니다.

Shear tool 역시 매우 중요합니다. 테스트동안 고응력이 적용되기 때문에 tool은 Wedge에 일치해야 합니다. XYZTEC은 표준 Tool과 고객맞춤형 tool을 제공합니다. 이 테스트는 microwave, high frequency, power, automotive, hybrid 와 solar devices를 생산하는 고객들이 사용하고 있습니다.

## Contact us

더 필요한 것, 견적서 또는 references 목록 등등이 있다면 [여기를 클릭하세요.](#)

## Relevant products

© 1999-2019 XYZTEC BV

### XYZTEC Netherlands

J.F. Kennedylaan 14-B  
5981 XC Panningen  
Netherlands ([map / route](#))  
Tel: +31-77-3060920  
Fax: +31-77-3060919  
[sales@xyztec.com](mailto:sales@xyztec.com)  
[support@xyztec.com](mailto:support@xyztec.com)

### Other offices

- Germany  
- Taiwan  
- Thailand  
- United Kingdom  
- USA: California  
- USA: Massachusetts  
- [Distributors](#)

### Bond testers

- Condor *Sigma*  
- Condor *Sigma Lite*  
- Condor *Sigma W12*  
- Condor *150HF*

This is page 1/3  
[Click here](#) for the [web version](#).

**Technology leader in bond testing worldwide**



- Condor Sigma
- Condor Sigma Lite
- Condor Sigma W12
- Condor 150HF
- Revolving Measurement Unit
- Sensors
- Tweezers
- Vision
- Software
- Calibration
- Work holders

---

## Increase your bondtesting throughput

The **Condor Sigma** is not only the most accurate bondtester in the world, but also the fastest. [Click here to read the study that proves the Condor Sigma is up to 39% faster than the competition.](#)

---

## Special applications

Please [contact us](#) if you have any questions or special bond testing requirements.

---

## Condor Sigma brochure

[Click here](#) to download the [Condor Sigma brochure](#), the [Condor Sigma W12 brochure](#) or the [Condor Sigma Lite brochure](#) or the [Condor Sigma Vision brochure \(PDF\)](#).

---

## Representatives

To find your local representative, please select a region:

- Americas
- Europe, Middle East, Africa
- Greater China
- Japan
- Asia / Pacific



[Click here to access the XYZTEC consumables webshop](#)

© 1999-2019 XYZTEC BV

### **XYZTEC Netherlands**

J.F. Kennedylaan 14-B  
5981 XC Panningen  
Netherlands ([map / route](#))  
Tel: +31-77-3060920  
Fax: +31-77-3060919  
[sales@xyztec.com](mailto:sales@xyztec.com)  
[support@xyztec.com](mailto:support@xyztec.com)

### **Other offices**

- Germany  
- Taiwan  
- Thailand  
- United Kingdom  
- USA: California  
- USA: Massachusetts  
- [Distributors](#)

### **Bond testers**

- Condor *Sigma*  
- Condor *Sigma Lite*  
- Condor *Sigma W12*  
- Condor *150HF*

This is page 2/3  
[Click here](#) for the [web version](#).

---

***Technology leader in bond testing worldwide***



## **XYZTEC Netherlands**

J.F. Kennedylaan 14-B  
5981 XC Panningen  
Netherlands ([map](#) / [route](#))  
Tel: +31-77-3060920  
Fax: +31-77-3060919  
[sales@xyztec.com](mailto:sales@xyztec.com)  
[support@xyztec.com](mailto:support@xyztec.com)

## **Other offices**

- Germany
- Taiwan
- Thailand
- United Kingdom
- USA: California
- USA: Massachusetts
- [Distributors](#)

## **Bond testers**

- Condor *Sigma*
- Condor *Sigma Lite*
- Condor *Sigma W12*
- Condor *150HF*

This is page 3/3  
Click [here](#) for the [web version](#).

***Technology leader in bond testing worldwide***