

LED applications

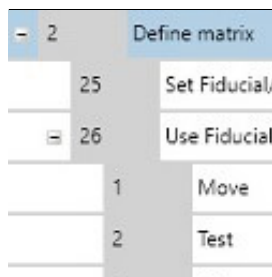
LED

The LED (Light Emitting Diode) technology continues to grow requiring new and innovative bond testing solutions. Standard LEDs have evolved over the years to high brightness LEDs.

During daily use, LEDs are exposed to extreme stress levels. Thermo mechanical aging of the dies and bonds are of great concern. Thus, XYZTEC offers **wire pull, ball shear, die shear and special tests** for wafers and optical components.

Case study: Fully automated LED wafer testing

In close collaboration with the customer, XYZTEC developed a **unique automation integrated solution**, based on the standard Condor 100 platform.



Matrix program snippet

Matrix programming for automatic lead frame testing

Leadframe products often have repetitive patterns, which can be tested automatically with the **Condor Sigma**. The engineer only needs to program the test sequence once and specify the pitch between the matrix elements. **Read more about this time saving feature** in our **newsletter on matrix bond testing**.

Bond testing seminars

Aiming to improve understanding of bond testing in the industry, XYZTEC organizes **seminars** to

© 1999-2019 XYZTEC BV

XYZTEC Netherlands

J.F. Kennedylaan 14-B
5981 XC Panningen
Netherlands ([map / route](#))
Tel: +31-77-3060920
Fax: +31-77-3060919
sales@xyztec.com
support@xyztec.com

Other offices

- Germany
- Taiwan
- Thailand
- United Kingdom
- USA: California
- USA: Massachusetts
- **Distributors**

Bond testers

- Condor *Sigma*
- Condor *Sigma Lite*
- Condor *Sigma W12*
- Condor *150HF*

This is page 1/2
Click [here](#) for the **web version**.

Technology leader in bond testing worldwide



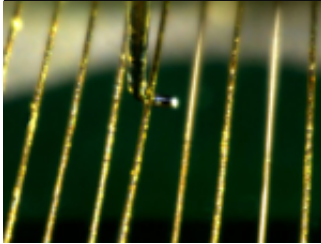
present and disseminate knowledge in a straightforward format. [Click here to find out more about bond testing seminars.](#)

Contact us

Please [contact us](#) for more information, to request a demonstration or a quotation.

Relevant test types

A wide variety of [test types](#) are relevant for LED, among which are:



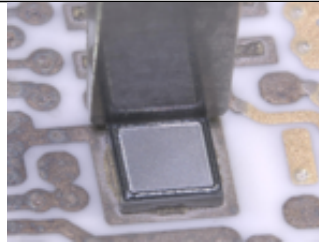
Thin gold wire pull test

Pull testing

- Tweezer pull
- Wire pull

Shear testing

- Ball shear
- Die shear



Die shear

Special applications

Please [contact us](#) if you have any special tweezer requirements.

XYZTEC Netherlands

J.F. Kennedylaan 14-B
 5981 XC Panningen
 Netherlands ([map](#) / [route](#))
 Tel: +31-77-3060920
 Fax: +31-77-3060919
sales@xyztec.com
support@xyztec.com

Other offices

- Germany
- Taiwan
- Thailand
- United Kingdom
- USA: California
- USA: Massachusetts
- [Distributors](#)

Bond testers

- Condor *Sigma*
- Condor *Sigma Lite*
- Condor *Sigma W12*
- Condor *150HF*

This is page 2/2
[Click here](#) for the [web version](#).