

Solder ball shear

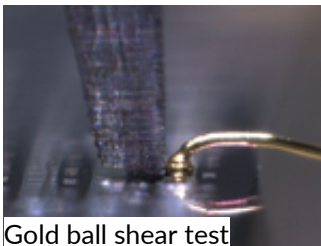
Ball shear test

Gold ball shear

- Sensor accuracy $\pm 0.075\%$
- Shear height accuracy $\pm 1\mu\text{m}$
- Complies with industry standards
- In accordance with JEDEC JESD22-B116 and ASTM F1269 for wire bond ball shear.
- [Click here for solder ball shear](#)

Gold ball shear test

[Video not included in PDF: [click here to view online](#)]



Gold ball shear test

The XYZTEC Gold Ball bond measurement unit can be fitted to any of our machines. Precise alignment to the bond is simple and stress free using the standard EZ controls. Precise shear height control and force measurement ensure accurate data with minimum distribution. Password protected flexibility of the programmable test parameters allow you to be in control.

An optional camera system is available for visually inspecting the test result. XYZTEC complies with all relevant international standards such as ASTM, MIL and JEDEC.

Solder ball shear test

- Sensor accuracy $\pm 0.075\%$
- Shear height accuracy $\pm 1\mu\text{m}$
- Complies with industry standards

© 1999-2018 XYZTEC BV

XYZTEC Netherlands

J.F. Kennedylaan 14-B
5981 XC Panningen
Netherlands ([map / route](#))
Tel: +31-77-3060920
Fax: +31-77-3060919
sales@xyztec.com
support@xyztec.com

Other offices

- Germany
- Taiwan
- Thailand
- United Kingdom
- USA: California
- USA: Massachusetts
- [Distributors](#)

Bond testers

- Condor *Sigma*
- Condor *Sigma Lite*
- Condor *Sigma W12*
- Condor *150HF*

This is page 1/3
[Click here](#) for the [web version](#).

Technology leader in bond testing worldwide



- In accordance with JEDEC JESD22-B117A for solder ball shear
- Fast, destructive, inline testing of lead-free BGA's
- Test speed from 5 mm/s to 50 mm/s
- [Click here for gold ball shear](#)

[Video not included in PDF: [click here to view online](#)]

Close-up solder ball shear

[Video not included in PDF: [click here to view online](#)]

Contact us

Did we catch your attention? Please [contact us](#) for more information, to request a demonstration or a quotation.

Relevant products

- [Condor Sigma](#)
- [Condor Sigma Lite](#)
- [Condor Sigma W12](#)
- [Condor 150HF](#)
- [Revolving Measurement Unit](#)
- [Sensors](#)
- [Tweezers](#)
- [Vision](#)
- [Software](#)
- [Calibration](#)
- [Work holders](#)

Increase your bondtesting throughput

The [Condor Sigma](#) is not only the most accurate bondtester in the world, but also the fastest. [Click here to read the study that proves the Condor Sigma is up to 39% faster than the competition.](#)

Special applications

Please [contact us](#) if you have any questions or special bond testing requirements.

Condor Sigma brochure

[Click here to download the Condor Sigma brochure](#), the [Condor Sigma W12 brochure](#) or the [Condor Sigma Lite brochure](#) or the [Condor Sigma Vision brochure \(PDF\)](#).

© 1999-2018 XYZTEC BV

XYZTEC Netherlands

J.F. Kennedylaan 14-B
5981 XC Panningen
Netherlands ([map / route](#))
Tel: +31-77-3060920
Fax: +31-77-3060919
sales@xyztec.com
support@xyztec.com

Other offices

- Germany
- Taiwan
- Thailand
- United Kingdom
- USA: California
- USA: Massachusetts
- [Distributors](#)

Bond testers

- [Condor Sigma](#)
- [Condor Sigma Lite](#)
- [Condor Sigma W12](#)
- [Condor 150HF](#)

This is page 2/3
[Click here for the web version.](#)

Technology leader in bond testing worldwide



Representatives

To find your local representative, please select a region:

- Americas
- Europe, Middle East, Africa
- Greater China
- Japan
- Asia / Pacific



[Click here](#) to access the XYZTEC consumables webshop

XYZTEC Netherlands

J.F. Kennedylaan 14-B
5981 XC Panningen
Netherlands ([map](#) / [route](#))
Tel: +31-77-3060920
Fax: +31-77-3060919
sales@xyztec.com
support@xyztec.com

Other offices

- Germany
- Taiwan
- Thailand
- United Kingdom
- USA: California
- USA: Massachusetts
- [Distributors](#)

Bond testers

- Condor *Sigma*
- Condor *Sigma Lite*
- Condor *Sigma W12*
- Condor *150HF*

This is page 3/3
Click [here](#) for the [web version](#).