

Condor Sigma Lite

A bond tester that can grow with your company



Condor Sigma Lite



Technology leader in bond testing worldwide

Future proof performance and flexibility

With Condor *Sigma Lite* XYZTEC gives you a low cost entry point without sacrificing performance to meet future demands. The Condor *Sigma Lite* is upgradeable to the specifications of the regular Condor *Sigma* and beyond. Whether you need a dedicated or multipurpose bond tester, the Condor *Sigma* platform is the best choice featuring unparalleled accuracy, the best ergonomics, highest throughput, maximum flexibility and the lowest cost of ownership.

Use existing tools and work holders

This system is designed to be compatible with the most commonly used work holders and tooling, that you may already have in stock. The compatibility modes ensure consistency in your measurement results across machines. Equipped with the most powerful intuitive software, operators can quickly learn to use the Condor *Sigma Lite* alongside your existing equipment and procedures.

Revolving Measurement Unit

The Revolving Measurement Unit (RMU) with 6 sensor positions eliminates warm up time and greatly reduces the risk of sensor damage. The standard configuration is max. 100 kgf shear and 10 kgf pull and push, but it can be upgraded to 200 kgf shear and 100 kgf pull and push. This flexibility allows the bond tester to expand with your growing business.

Modular and open design

All sensor modules are interchangeable and fit any single heads and the Revolving Measurement Unit. Fully calibrated and tested, each sensor module can be removed and replaced within a few minutes. Our calibration is also compatible with calibration sets from other suppliers.

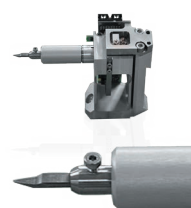
The open frame design and the same stroke for all three stages offer the capability to handle different sample sizes with little or no special tooling. High accuracy quick release work holders and measurement units ensure rapid sample loading and production setup.



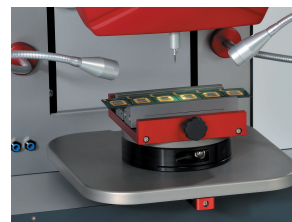
Modular Pull sensor:
Use existing pull tools



Quick change release:
Change work holders in seconds.



Modular Shear sensor:
Use existing shear tools



Compatibility: Use existing work holders with our shuffle plate.

Specifications

		Standard	Maximum*
Force sensors	Revolving measurement units (up to 6 sensors) Single measurement units (1 sensor) Ranges 10 gf, 100 gf, 1 kgf, 10 kgf, 100 kgf Maximum Shear force (Y-Axis) Maximum Pull and Push force (Z-Axis) Accuracy Resolution Sampling rate Correlation with other testing systems	100 kgf 10 kgf ±0.2 % 16 bit 2 kHz	200 kgf 100 kgf ±0.075 % 24 bit 10 kHz
Stages	Resolution of built in optical linear encoders X travel Y Travel Z Travel Axis (X,Y & Z) speed Tool rotation accuracy	30 nm 168 mm 168 mm 168 mm 5 mm/s ±1 °	30 nm 370 mm 168 mm 168 mm 50 mm/s ±1 °
Frame	Foot print X Foot print Y Height Weight		620 mm 558 mm 608 mm 75 kg
Controls	Ergonomic layout to SEMI S8 Keyboard drawer Two ergonomic joysticks with 6 buttons each LED illumination on one side, upgradeable to LED ring light Optional LCD support and up to 3 camera's		
Work holders	Maximum flexibility for many sample sizes Quick release, high force and positional accuracy interface Compatible with previous XYZTEC and competitor tooling		
Software	Supports Microsoft Windows 7, 32 and 64 bit systems Easy to learn intuitive graphical user interface Minimum number of mouse clicks Customizable screens, optimized for wide and touch screens Integrated reports and data export features Easy data sorting, grouping and filtering Integrated SPC features and system GR&R analysis Multiple languages		
Services	Electric 110-240V single phase no air required		

* The Condor *Sigma Lite* can be upgraded with special packages to get a better accuracy, higher speed or other functionalities. The maximum specification shows the best specification.

* The pictures shown in this brochure include accessories that are not part of the default configuration packages.

Specifications are subject to change without prior notice.

